



New
Lomtec®
ActiveWeb 3.0

Installation Manual
Lomtec ActiveWeb 3.0

Last revised: November 24, 2003



Welcome

Welcome to the installation manual for the Lomtec ActiveWeb 3.0 content management system. This document will guide you step-by-step through the Lomtec ActiveWeb installation process. If you experience any difficulties while installing ActiveWeb, this guide should help you complete the installation successfully. All important steps and settings are explained in detail in this manual.

In addition to the installation manual, you can download also developer and user manuals on the Lomtec.com web site.

About Lomtec

Lomtec is an international provider of e-Business solutions. Lomtec empowers organizations to efficiently manage complex content and collaboration needs with solutions renown for high-performance, rapid implementation, scalability and ease-of-use. The main software products of Lomtec are ActiveWeb and ActiveOffice.

Lomtec ActiveWeb is a full-featured web content management system enabling organizations to collect, manage, and publish content across its Internet and intranet web sites.

Lomtec ActiveOffice is an integrated software application that provides a comprehensive solution for managing enterprise content throughout an organization and enabling smoother collaboration among employees, customers and partners. The company's unparalleled technical excellence and dedication to customer satisfaction have led products and services from Lomtec to be adopted by such prominent customers as the United Nations and Scania.

In addition to ActiveWeb and ActiveOffice, Lomtec provides a wide range of comprehensive professional services that encompasses everything from an analysis of what your company needs through product rollout and training to keep implementations on schedule and minimize time-to-productivity for your staff. Highly skilled professionals bring extensive product knowledge and experience to our customers' projects directly from day one.

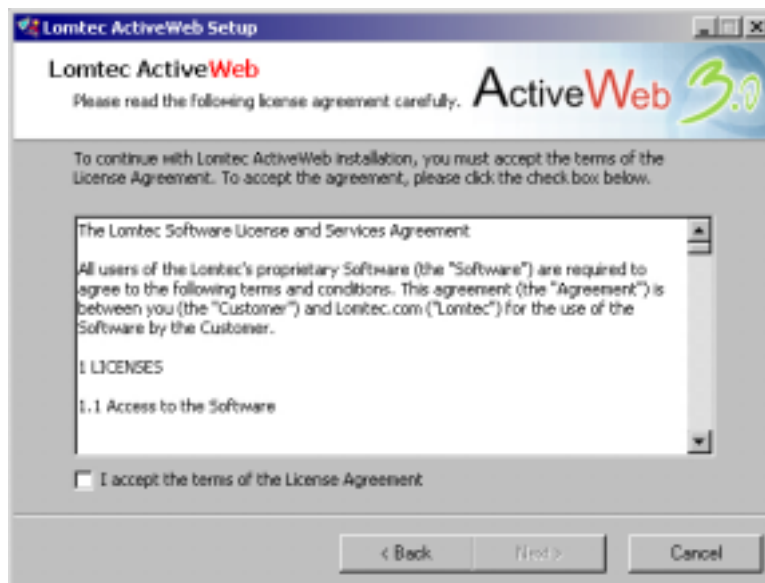
Lomtec offers the following services:

- [Web Design](#)
- [Training](#)
- [Product Implementation](#)
- [Web Hosting](#)
- [Support](#)
- [Development of Software Applications](#)

Step1: Licence agreement

Please read the license agreement carefully and if you agree with all terms and conditions, click the check box at the bottom of the dialog box. Then click the Next button to continue the setup process.

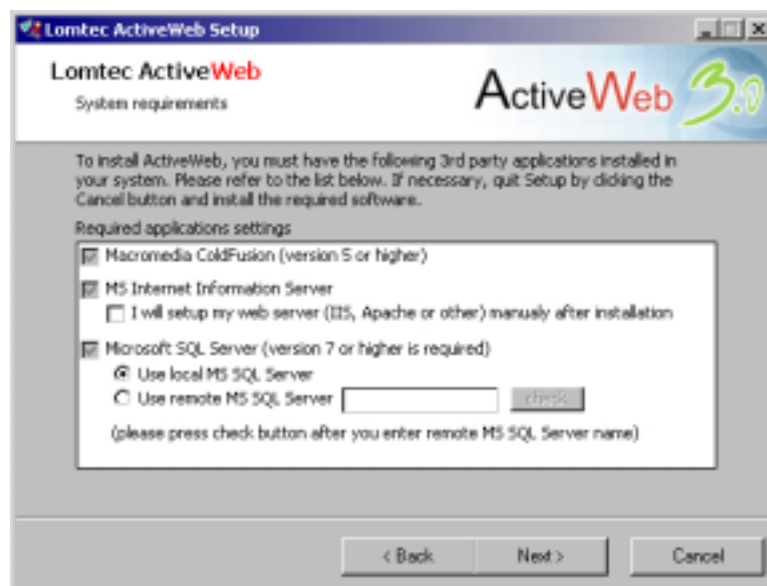
If you disagree with any of the terms mentioned in the license agreement, you can not install nor use Lomtec ActiveWeb.



Step 2: System Requirements

Lomtec ActiveWeb operates on a popular, inexpensive, reliable, industry-leading computing and database management platforms - Microsoft Internet Information Server, Apache, Macromedia ColdFusion Application Server and Microsoft SQL Server database server. For more information about these platforms please visit following web sites:

- www.macromedia.com
- www.microsoft.com
- www.apache.org



Following are the system requirements to instal Lomtec ActiveWeb for Windows as well as for other platforms. However this instalation was created for Windows platform only. Please contact Lomtec to instal ActiveWeb on other platforms.

Lomtec ActiveWeb for Windows

- Internet Information Server 4.0/5.0 or Apache Web Server
- Macromedia ColdFusion Server 5.0 Professional/Enterprise or Macromedia ColdFusion MX Standard / Enterprise
- MS SQL Server 7.0/2000
- Windows NT/2000 Server/2000 Professional /XP

Lomtec ActiveWeb for Linux

- Linux operation system
- Apache Web Server
- Macromedia ColdFusion Server 5.0 Professional/Enterprise or Macromedia ColdFusion MX Standard / Enterprise
- MS SQL Server 7.0 / 2000 (on a dedicated database server)



Lomtec ActiveWeb for Unix

- One of the following operation systems: Sun Solaris, HP-UX, IBM AIX
- Apache Web Server
- Macromedia ColdFusion Server 5.0 Enterprise or Macromedia ColdFusion MX Enterprise
- MS SQL Server 7.0 / 2000 (on a dedicated database server)

Lomtec ActiveWeb for J2EE

- One of the following application servers: IBM WebSphere / BEA WebLogic / Macromedia JRun / Sun ONE
- Macromedia ColdFusion Server MX Enterprise
- MS SQL Server 7.0 / 2000 (on a dedicated database server)

Macromedia ColdFusion

Macromedia ColdFusion 5/MX application server must be installed and running prior to the installation of ActiveWeb.

If you can see checkbox by "Macromedia ColdFusion Server", then you have ColdFusion Server installed on your computer.

If there is no checkbox, ActiveWeb Setup has not detected any Macromedia ColdFusion Server installed on your machine. You cannot continue with the setup, until you install Macromedia ColdFusion Server.

For more information on installing ColdFusion Server please visit www.macromedia.com/software/coldfusion. There is a trial version of Macromedia ColdFusion available. A copy of ColdFusion MX 6.1 is also located on Lomtec ActiveWeb Installation CD.

Web Server

Web server software must be installed and running prior to the installation of ActiveWeb. Lomtec ActiveWeb was tested to work with industry standard web servers - Apache and Microsoft Internet Information Server.

Lomtec ActiveWeb installation supports Microsoft Internet Information Server automated configuration. If you use other web server (e.g. Apache) you will need to setup your web server manually (you only need to setup new web site or virtual directory).

However, we recommend that you use the Microsoft Internet Information Server (MS IIS), which can be configured automatically during the setup process. A copy of Microsoft Internet Information Server installation can be found on your Windows NT/2000/XP installation CD. For more information on how to install the MS IIS, please visit <http://www.microsoft.com>.

For more information about Apache web server please visit web site <http://www.apache.org>.

Automated Web Server configuration

In case that Microsoft Internet Information Server is installed on your computer Lomtec ActiveWeb can setup your web server automatically.

Manual Web Server configuration

If you do not use Internet Information Server you must setup you web server manually after installation process. If you do not want that our installation process will configure your Internet Information Server please check the checkbox "Setup Web Server manually". We do not recommend to choose manual web server configuration for inexperienced users.

Microsoft SQL Server

Microsoft SQL Server 7.0/2000 must be installed and running prior to the installation of ActiveWeb. It is possible to use local as well as remote MS SQL server installed on other server on your network.

Using local MS SQL Server

Microsoft SQL Server 7.0/2000 must be installed and running on your computer if you want to use local MS SQL Server option. If this option is not available, you do not have MS SQL Server installed locally. You must quit the setup, install the SQL server and then run the ActiveWeb Setup again or choose option for using remote MS SQL Server.

For more information on how to install MS SQL Server, please visit <http://www.microsoft.com/sql/>. There is a 6 months trial version of MS SQL Server 2000 available. A copy of the installation is also located on your ActiveWeb CD.

Using remote MS SQL Server

In case you want to use a remote MS SQL Server, select the "Remote MS SQL Server" option and enter the server's network name or IP address. Then click the apply button and wait while the installer will verify the setting.

If you did not receive any error message, then the Setup Wizard has successfully located your remote SQL Server.

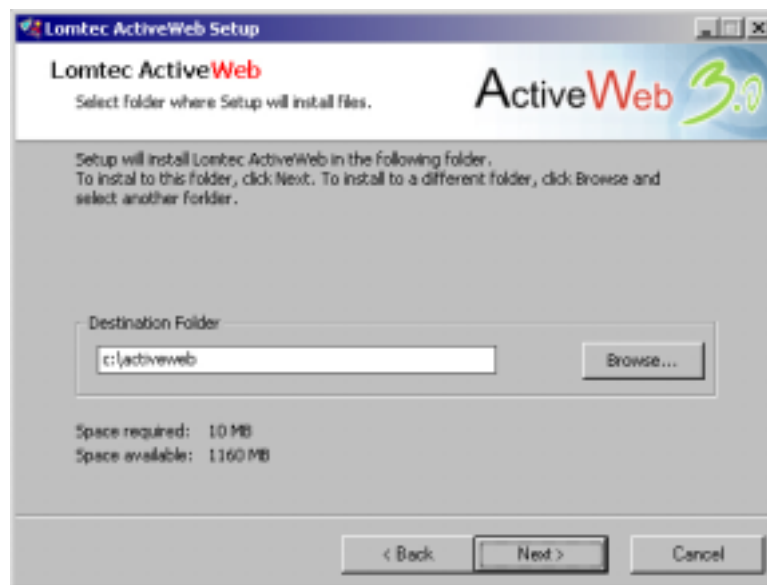
Microsoft SQL Server (version 7 or higher is required)
 Use local MS SQL Server
 Use remote MS SQL Server



If the "Remote Server not found" error message appeared, please verify the address you have entered. You may also want to check your network connection.

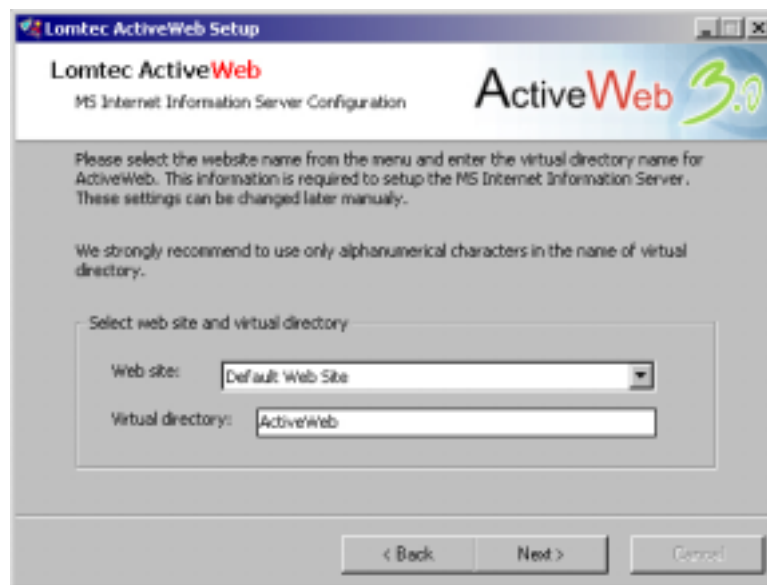
Step 3: Choosing Installation Folder

You can install ActiveWeb in any folder you want. The only limitation is that the target drive must have sufficient free space. We do not recommend to install ActiveWeb into your standard web space. We prefer to create a specific virtual directory or web site for ActiveWeb for security reasons.



Step 4: MS Internet Information Server Configuration

In case that you are running MS Internet Information Server on your computer and you did not request manual setup of web server in the Step 2 of the installation process you will be asked to provide more information to configure Microsoft Internet Information server.



Website

Lomtec ActiveWeb will run on virtual directory created under one of your existing web sites. Select the web site with which you want to use ActiveWeb from the dropdown menu. If there is no website available, you must quit the setup and create at least one website in your Microsoft Internet Information Server.

Virtual Directory

Lomtec.com ActiveWeb will run on virtual directory under some of your web sites. Please enter name of the virtual directory. Default value is ActiveWeb and you can change this setting for any reason. However, generally there is no need to change this setting.

Step 5: Database Server Setup

At the top of the "Microsoft SQL Server Information and Setup" box, you should be able to see the name or IP address of the MS SQL Server you have chosen in Step 3.



The screenshot shows a window titled "Lomtec ActiveWeb Setup" with a sub-header "Database settings" and the "ActiveWeb 3.0" logo. Below the header, a message states: "ActiveWeb Setup will automatically create and configure the database for you. Please enter the required data and then click the Next button to continue installation." The main section is titled "Microsoft SQL Server Information and Setup" and contains a form with the following fields: "MS SQL Server (IP Address): 127.0.0.1", "Database name:" with an empty text box, "User name:" with an empty text box, and "User password:" with an empty text box. At the bottom of the window are three buttons: "< Back", "Next >", and "Cancel".

Database name

Please enter the name of your database in the textbox. We recommend that you use only alphanumeric characters to avoid possible difficulties. Lomtec ActiveWeb will create entered database, create database structures and import data. **It is strongly recommended not to provide name of an existing database as this can lead to loss of data in that database.**

User name

Enter the administrator user name in the appropriate text field. This user should be able to create databases. In general user "sa" has all the permissions requested to install ActiveWeb database.

Password

Type the administrator password in the "Password" field.

Important: Please keep in mind, that you will not be able to continue database installation without correct user name and password.

If you are satisfied with all the settings, you may now click the next button to start the installation. If you want to make any changes or review the choices you made, just click the Back button.

Step 6: Installation Process

Please wait, while the Lomtec ActiveWeb Setup Wizard is copying files and configuring your system. It is strongly recommended that you do not use your computer until the setup is finished.

